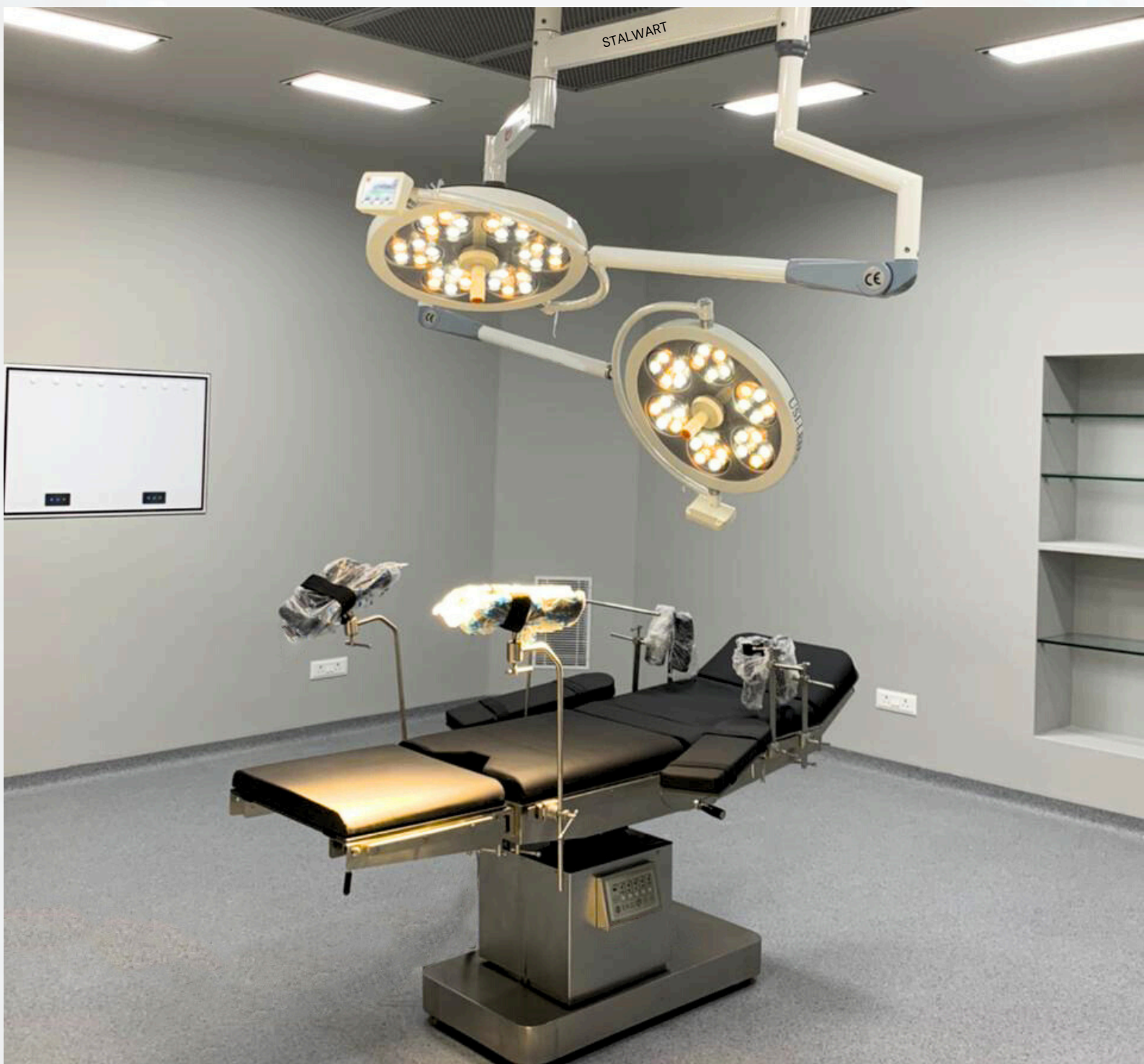


MODULAR OT CATALOG



91-9999012763, 9718784245



www.stalwartmeditech.com



WALL AND CEILING PANNEL

PPGI



- Durable PPGI wall paneling for OT/ICU with a 50mm composite construction.
- GI/AL framework with PUF insulation for thermal efficiency and fire resistance.
- ESDEE Putty-Sealed with Anti-Bacterial Paint for a Sterile finish.

- Premium SS 304 PUF panels ensure sterility and thermal insulation.
- Front face: SS 304 (0.8mm), Back face: PPGI (0.6mm).
- Standard thickness: 50mm, customizable up to 80mm.
- Seamless joints with silicon sealant and 70mm coving for hygienic finishes.

SS



GLASS



- Acid-resistant, smooth, and easy-to-clean glass panels.
- Supports humanized design with color inkjet aesthetics.

LAMINAR AIR FLOW



Plenum

The filter housing and pressure chamber made out of high-end stainless steel 304 medical-grade steel with matt polish sheet thickness 1.2mm specially designed to deliver uniform velocity across the entire HEPA plenum to maintain uniform laminarity of air-01 No.

HERMETICALLY SEALER DOOR

MANUAL/ AUTOMATIC SLIDING DOOR



HINGE DOOR



PRD



HEPA FILTER



STORAGE UNIT



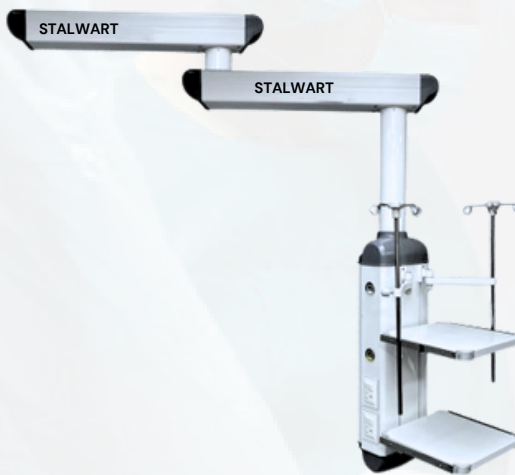
AIR HANDLING UNIT



The all handling unit shall be double skin type with Dx type cooling coil, backwards driven fan, with IPSS proelectra motor, filter with prefilter for filter enclosed in parcel body with FSH logs heater. Shall be controlled with specially designed control panel.

OT-PENDANT

DOUBLE ARM PENDANT



SINGLE ARM PENDANT



FIXED PENDANT



CONTROL PANEL

MEMBRANE TYPE

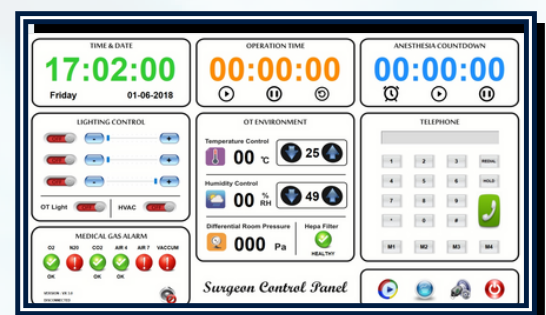


Features:

- Date Time - Real time clock
- Operation timing - Elapsed time
- Anesthesia timer - Count Down time
- Peripheral Light control with dimmer
- OT Light On/Off
- HVAC On/Off
- Temperature with set point
- Humidity with set point

TOUCH SCREEN

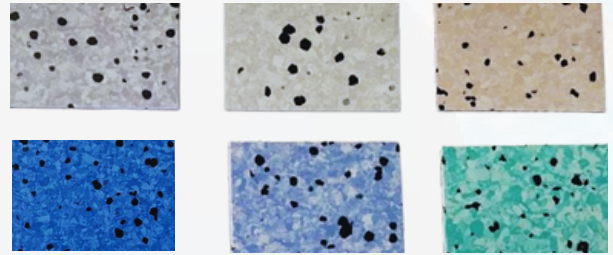
- Medical Gas Alarm provision
- HEPA filter Status Indicator
- Hands Free Telephone
- Differential Pressure
- Music Player



VINYL FLOORING



FLOORING SHADES



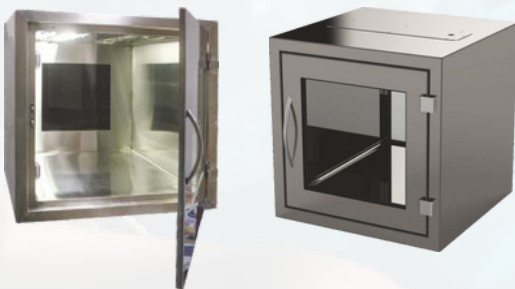
ANTI-BACTERIAL PAINT



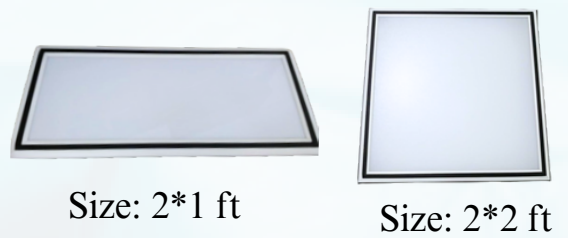
X-RAY VIEW BOX



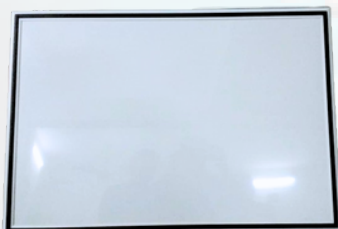
PASS BOX



PERIPHERAL LIGHTS



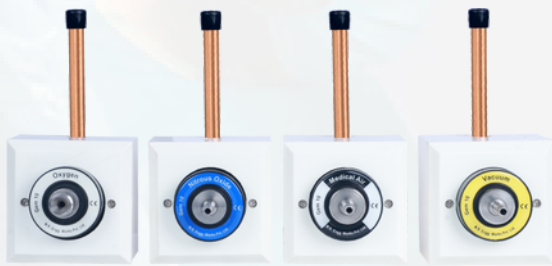
WRITTING BOARD



SCRUB STATION



MEDICAL GAS PIPELINE SYSTEM



British Standard Compatible (Gem 10)



Probes / Adapter



Puritan-Bennett Compatible

TUBING FOR MEDICAL GAS



OXYGEN

NITROUS OXIDE

MEDICAL AIR

CARBON DIOXIDE

AGSS / WAGD

VACUUM / SUCTION



WHITE

BLUE

BLACK

GREY

PURPLE

YELLOW

BED HEAD PANEL



AIR COMPRESSOR & VACUUM PUMP



Vacuum Pump

Air Compressor

AGSS - Simpex



Stalwart Meditech Pvt Ltd

Corporate office: A10, Second Floor, Patparganj Industrial Area, Delhi-110092

Registered office: 4/2544, Main Road, street No-11, Behari Colony, Shahdara, Delhi-110032

Mob: +91-99999012763, 9718784245 **Landline:** 011-49869776

Email: stalwartmeditechindia@gmail.com

